



AW-BB 20 User Manual



ENG

Explore more at www.jp-aiwa-global.com

Important Safety Instructions

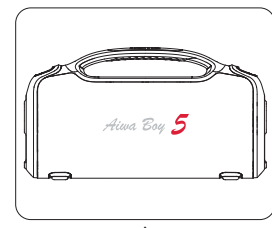
1. Please do not place device near any form of heat sources.
2. Please use the accessories specified by the manufacturer.
3. Please refer all servicing/repairs to a qualified personnel should there be any form of damage to the device.
4. Keep this user manual for future referencing/troubleshooting.
5. Please heed ALL safety cautions.

Safety Cautions

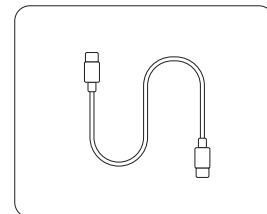
1. Always keep device AWAY from fire and heat sources.
2. Do NOT attempt to disassemble or alter the device.
3. Do NOT expose device to excessive heat (Direct sunlight etc.).
4. Do NOT immerse device into any form of liquids.

Unboxing

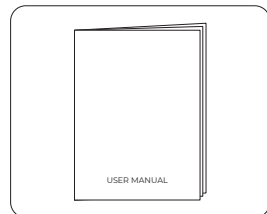
- AW-BB 20 BT Speaker x1
- Type-C charging cable x1
- Instruction x1



A



B



C

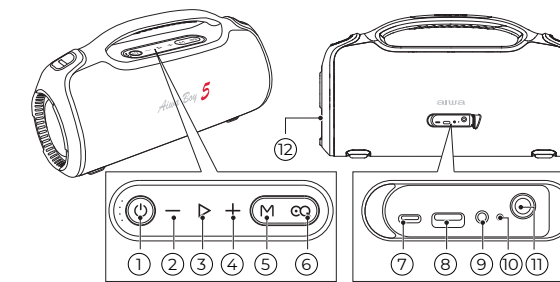
Please refrain from using any damaged components. Contact your local authorized AIWA distributor/customer service should you need any assistance.

Product Specifications

Model Number: AW-BB 20
 BT Version: V5.3
 Waterproof Level: IPX6
 BT Distance: ≥15M(When no obstacles)
 Play Mode: BT/AUX/U-Disk/TWS
 Battery: 11.1V, 4500mAh
 Rated Power: 120W
 Charging Input: 5 ~ 20V 2-3A Max 45W
 Working Time: 8-10 hours(depends on different volume)
 Charging Time: 2 hours
 Distortion Rate: THD≤5%
 Driver unit: Midbass ø4.5" × 2pcs, tweeter ø2" × 2pcs
 Product size: 465 x 192 x 254mm
 Product weight: 5.2kg±50g

The above playback & charging times are estimated values tested in a practical environment and may vary upon individual usage habits.

Product Overview



1. Power on/off/Reset
2. Volume down
3. Previous track
4. Volume up
5. Next track
6. EQ switch/ECHO/MIC volume/Guitar
7. Type-C input/output jack
8. USB-A jack (USB playback)
9. 3.5mm Aux-in jack
10. Reset
11. 6.5mm MIC jack
12. LED light

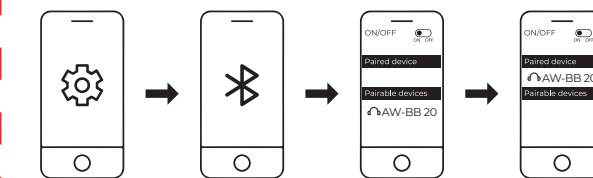
Connecting the Product

Power on/off

Press and hold "⏻" button for 2 seconds for power on, press and hold again to power off.

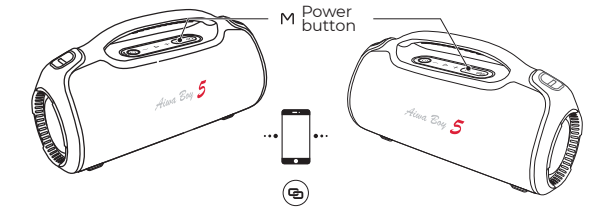
BT Mode

It will automatically enter BT mode after power on, and blue led indicator stays flashing.
 Turn on Bluetooth on your device to search "AW-BB 20" and connect it, a prompt voice can be heard after successful connection, at this time blue led indicator stays on, then you can enjoy your music.
 Press twice "⏻" button to disconnect BT.
 Press and hold "▶" button for 3 seconds to remove BT pairing info as reset.
 Short press "M" button to switch modes (BT-USB playback-Aux-in).



TWS Function

Press twice "M" button on one speaker or two speakers after power on, a prompt voice will be heard once successful connection (do not connect with your device before that). The submaster speaker led indicator stays on, and master speaker stays flashing. Follow up step 2 operation to connect Bluetooth to enjoy your music.



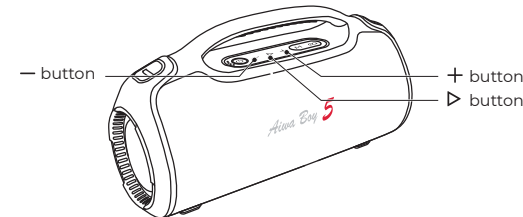
EQ Switch

Short press "EQ" button to switch Balance/Deep Bass/Outdoor circularly.



Play Control

- Short press "-" button to turn down the volume; short press "+" button to turn up the volume. A beep prompt voice can be heard when maximum volume.
- In BT/USB playback mode, press and hold "+" button for 2 seconds for next track; press and hold "-" button for 2 seconds for previous track.
- In BT/USB playback mode, short press "▶" button to pause the music, press again to resume music; In Aux mode, short press "▶" button to be mute, press again to remove mute.



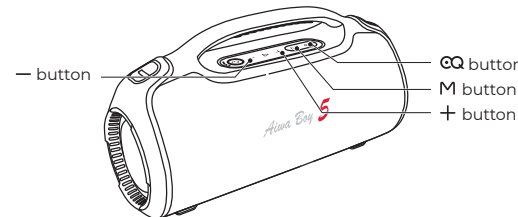
Light Modes

No.	Operation	LED lights modes
1	Default off	no lights
2	short press power button	Colorful gradient lights
3	short press power button	Colorful rhythmic lights
4	short press power button	Blue rhythmic light

Remark: short press power button to switch RGB lights modes in the order of No.1-2-3-4 to loop

Microphone/Guitar

- **Power-on status:** For a wired microphone, connect it to MIC jack on speaker, it access to be used automatically.
- **Power-on status:** For a guitar, connect it to MIC jack on speaker, press twice "EQ" button to switch guitar mode to access it.
- **MIC volume/ECHO adjustment:** press and hold "EQ" button for 5 seconds (orange led indicator stays flashing), then short press "-" button to turn up ECHO volume, short press "+" button to turn down ECHO volume; Press and hold "EQ" button again for 5 seconds (green led indicator stays flashing), then short press "+" button to turn up microphone volume, short press "-" button to turn down microphone volume.
- **Guitar volume adjustment:** press and hold "EQ" button for 5 seconds (green led indicator stays flashing), then short press "+" button to turn up guitar volume, short press "-" button to turn down guitar volume.



AUX/USB Playback

It will switch automatically to Aux-in mode after plug in Aux cable, it can transfer music through the cable. Plug in USB flash drive with songs, it automatically switch USB playback mode.

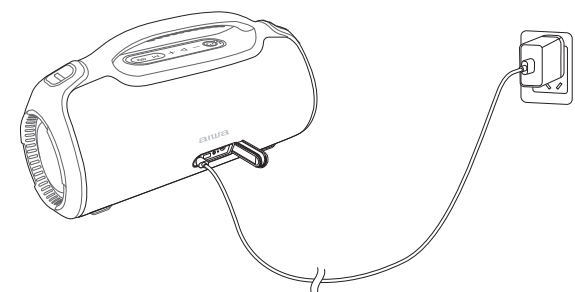
Battery saving

Speaker will power off automatically to save battery when there is no any device connected in 10 minutes. Press and hold "⏻" button for 2 seconds to power on.

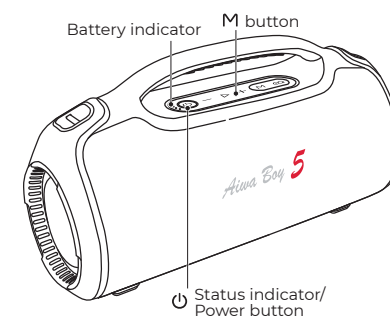
Charging/Power Supply

Important notice:

- Do not use the adapter which has no any safety certificate.
 - Suggest to use output 45W adapter to charge.
1. Please charge it as soon as possible when you hear low battery prompt voice.
 2. Battery level indicator stay flashing while charging (battery level 25%/50%/75%/100%) and it stays on when charging done.



Function Illustration



Battery indicator	White indicator for battery
Status indicator	Blue indicator for BT, green indicator for Aux, orange indicator for USB flash drive
EQ indicator	White indicator for EQ, orange indicator for ECHO, green indicator for MIC/Guitar volume
Charging indicator	Battery indicator stays flashing while charging; battery indicator stays on when charging finished.
Low battery	Battery indicator stays flashing when battery is low.

Frequently Asked Questions

Q1: What kind of charger should we use for the speaker?

A: All common USB chargers can be used, while we suggest the ones 5V/2A or above 2A.

Q2: What if there is noise or discontinuous sound during playing?

A: The speaker can be normally used within 10m under no obstruction environment. If it is beyond 10m or with obstruction, there might be noise or discontinuous sound.

Q3: Why the speaker power off automatically after power on but no Bluetooth disconnection?

A: When there is no bluetooth pairing in 10 minutes, the speaker will shut down automatically to reduce power consumption.

Q4: Why does the speaker cannot connect the once-paired cellphone?

A: First, remove the speaker's paired name from the cellphone's Bluetooth List and then restart pairing.

Q5: What is the working sequence of the speaker?

Default mode is Bluetooth mode but when insert in AUX in cable, it will be AUX IN mode.

Q6: The speaker cannot be started up in a normal situation.

A: Please plug in the charger and try in a few minutes or try to long press power button 10-30s to reset.

Frequently Asked Questions

Notes:

1. Please read this manual carefully before use and keep it properly.
2. For the first use, please fully charge the product.
3. Pls use certified adapter that has passed national safety certification.
4. If you do not use the product for a long time, be sure to charge it once within a month at least to maintain its performance.
5. Do not use this product in an extremely cold or hot environment, such as temperature beyonds the range of 5 C -35 C. If use it beyond the above range, the product may stop automatically to protect the internal circuit.
6. When charging it in a high temperature environment, the product may automatically stop charging to protect the battery. At this time, the charging indicator usually flashes quickly to indicate that the charging environmental temperature or the product internal temperature is too high.
7. Storage environment temperature: -5 ~ 35 C RH < 70% (recommended 25 C ± 5).

Important safety instructions:

1. Do not disassemble or repair this speaker personally, otherwise it may cause product damage or personal injury.
2. Do not use it in dusty, humid, dry, and high-temperature environment.
3. Do not place this product near a heat source, or a place with direct sunlight, a lot of dust, or mechanical vibration.
4. In order to reduce the risk of fire, please do not cover this product with newspapers, tablecloths, curtains etc., during use.
5. If the product has a waterproof feature, please do not exceed the nominal parameter range when using it.
6. When the product is damaged such as the power cord or plug is damaged, liquid enters or objects fall into the device, unable to operate normally or falls, it must be repaired.
7. When the product is fully charged, do not connect it to the charger for further long time charging.
8. The maximum ambient temperature should not exceed 40°C.

*This speaker supports mobile phones/ tablets/ PCs etc. Here this User Manual is illustrated base on mobile phones.



Explore more at www.jp-aiwa-global.com